



AVK REPICO® - SLIP TYPE COUPLING WITH TWO LOCKS LONG VERSION (SDL)

745/29-113

Non-tensile / Flexible, for all pipes, stainless steel 316, SILICONE

AVK's Repico® product program consists of stainless steel pipe couplings and repair couplings for pipe diameters from DN 15 up to DN 2000. The Repico® range offers a quick and simple connection solution for all pipes with possibility of angular deflection and easy handling due to the compact and light weight design.

Product description:

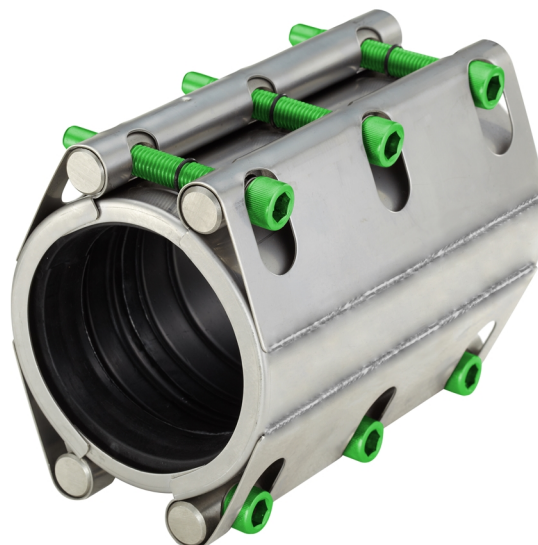
Repico® SDL - Slip type coupling with two locks long version (non-tensile / flexible) to connect all pipes. For water and neutral liquids -70° C up to +200° C

Test/Approvals:

- Rina (pending approval)
- LR (pending approval)
- DNV-GL (pending approval)
- ABS (pending approval)
- BV (pending approval)

Features:

- Slip type coupling with two locks provides a connection solution for all pipes that needs to be able to expand/contract and/or support the restraint pipe. Available in DN 650-1000
- Progressive sealing
- Easy installation by use of a torque wrench, limited space required for installation due to compact design
- Pressure range up to 10,7 bar (155 PSI) depending on size
- Max. angular deflection 2° for DN \geq 200
- Made of stainless steel 316
- Green PTFE coated bolts
- Light weight, appr. 30% in comparison with flanged connections
- 60% noise reduction compared to rigid connections

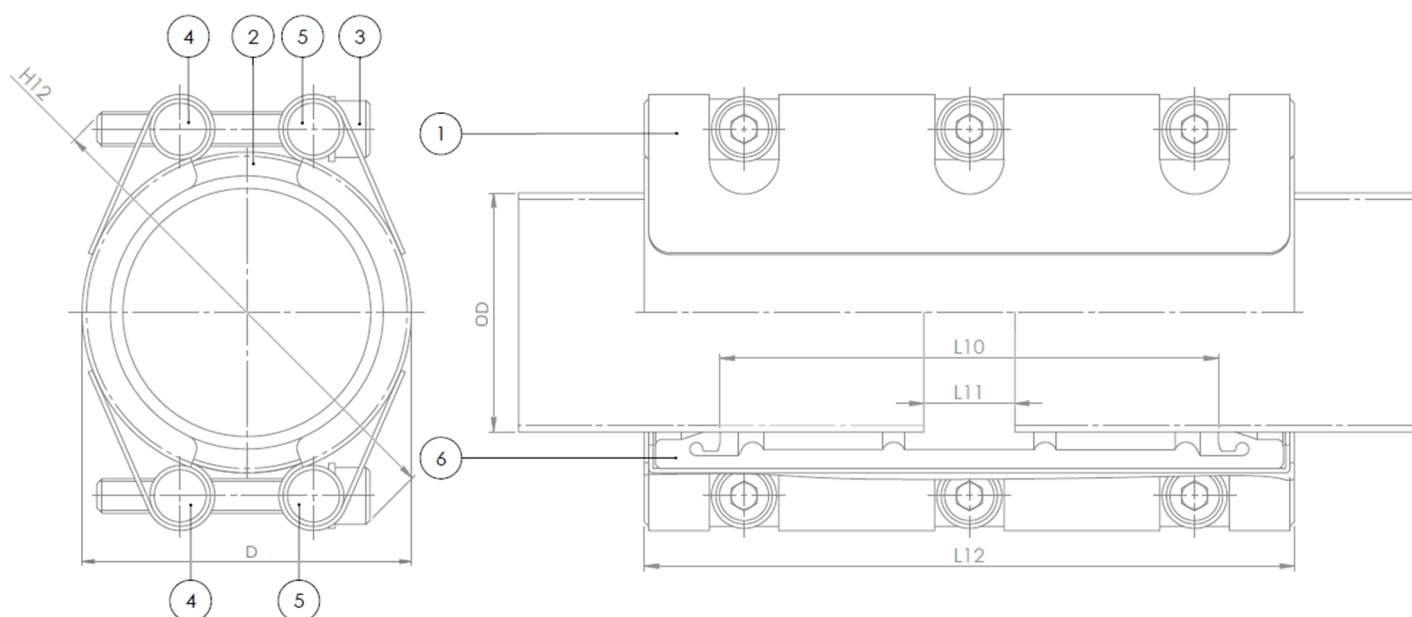


Expect ... **AVK**

AVK REPICO® - SLIP TYPE COUPLING WITH TWO LOCKS LONG VERSION (SDL)

745/29-113

Non-tensile / Flexible, for all pipes, stainless steel 316, SILICONE



Component list:

1. Body	Stainless steel 316	4. Nut	Stainless steel 316
2. Side plate	Stainless steel 316	5. Washer	Stainless steel 316
3. Bolt	Stainless steel 316 / PTFE coated	6. Sealing	Silicone Rubber

Components may be substituted with equivalent or higher class materials without prior notification.

Reference nos. and dimensions:

AVK ref. no.	Tolerance mm	Pipe diam. mm	Working Pressure / bar	D mm	H12 mm	L10 mm	L11 mm	L12 mm	Bolts (no x M x L)	Torque Nm	Theoretical weight / kg
745-29-0020-113	19,5 - 21,3	20,0	42	33	52	70	8	100	6XM6X45	7	0.5
745-29-0021-113	21,0 - 23,0	21,3	42	35	53	70	8	100	6XM6X45	7	0.5
745-29-0025-113	24,0 - 26,5	25,0	42	38	57	70	8	100	6XM6X45	7	0.6
745-29-0027-113	26,0 - 28,5	26,7	42	40	58	70	8	100	6XM6X45	7	0.6
745-29-0032-113	31,0 - 33,5	32,0	42	45	64	70	8	100	6XM6X45	7	0.6
745-29-0034-113	33,0 - 35,5	33,4	42	47	65	70	8	100	6XM6X45	7	0.6
745-29-0040-113	39,5 - 41,8	40,0	42	53	72	70	8	100	6XM6X45	7	0.6
745-29-0042-113	42,0 - 44,5	42,2	42	56	74	70	8	100	6XM6X45	7	0.6
745-29-0048-113	47,5 - 50,5	48,3	42	62	80	70	8	100	6XM6X45	7	0.7
745-29-0050-113	49,2 - 51,5	50,8	42	64	83	70	8	100	6XM6X45	7	0.7
745-29-0060-113	59,0 - 62,0	60,3	42	76	98	110	8	150	6XM8X55	12	1.7
745-29-0063-113	62,0 - 65,0	63,0	42	79	101	110	8	150	6XM8X55	12	1.7
745-29-0069-113	68,5 - 72,0	69,0	37	85	107	110	8	150	6XM8X55	12	1.8
745-29-0073-113	72,5 - 76,5	73,0	37	89	111	110	8	150	6XM8X55	12	1.8
745-29-0076-113	75,0 - 79,0	76,1	37	92	114	110	8	150	6XM8X55	12	1.8
745-29-0089-113	88,0 - 92,0	88,9	37	109	137	150	15	200	6XM12X70	15	3.6
745-29-0101-113	100,0 - 104,0	101,6	37	122	150	150	15	200	6XM12X70	15	3.7
745-29-0104-113	102,0 - 106,0	104,0	37	124	152	150	15	200	6XM12X70	15	3.8
745-29-0106-113	105,0 - 108,0	106,3	37	126	154	150	15	200	6XM12X70	15	3.8
745-29-0108-113	106,0 - 110,0	108,0	37	128	156	150	15	200	6XM12X70	15	3.8
745-29-0114-113	113,0 - 118,0	114,3	37	134	162	150	15	200	6XM12X70	15	3.9
745-29-0139-113	138,0 - 142,0	139,7	37	161	193	150	15	201	6XM12X80	25	4.8
745-29-0141-113	139,5 - 144,0	141,3	37	163	195	150	15	201	6XM12X80	25	4.8

The designs, materials and specifications shown are subject to change without notice due to the continuous development of our product range.

**AVK REPICO® - SLIP TYPE COUPLING WITH TWO LOCKS LONG VERSION
(SDL)****745/29-113****Non-tensile / Flexible, for all pipes, stainless steel 316, SILICONE****Reference nos. and dimensions:**

AVK ref. no.	Tolerance mm	Pipe diam. mm	Working Pressure / bar	D mm	H12 mm	L10 mm	L11 mm	L12 mm	Bolts (no x M x L)	Torque Nm	Theoretical weight / kg
745-29-0159-113	156,0 - 161,0	157,7	32	179	211	150	15	201	6XM12X80	25	5.1
745-29-0165-113	164,0 - 168,0	165,2	32	187	219	150	15	201	6XM12X80	25	5.2
745-29-0168-113	166,0 - 170,0	168,3	32	190	222	150	15	201	6XM12X80	25	5.2
745-29-0216-113	214,0 - 219,0	216,3	21	242	291	185	15	250	6XM16X120	45	13
745-29-0219-113	216,5 - 222,0	219,1	21	245	294	185	15	250	6XM16X120	45	13
745-29-0267-113	262,0 - 270,0	267,4	21	293	342	185	15	250	6XM16X120	45	14
745-29-0273-113	270,0 - 277,0	273,0	21	299	348	185	15	250	6XM16X120	45	14
745-29-0318-113	316,0 - 323,0	318,5	18	345	393	185	15	250	6XM16X120	75	15
745-29-0323-113	322,0 - 329,0	323,9	18	350	398	185	15	250	6XM16X120	75	15
745-29-0355-113	352,0 - 361,0	355,6	18	382	440	185	15	250	6XM16X140	75	16
745-29-0406-113	402,0 - 411,0	406,4	16	432	491	185	15	250	6XM16X140	75	17
745-29-0457-113	453,0 - 462,0	457,2	16	483	542	185	15	250	6XM16X140	90	18
745-29-0508-113	504,0 - 513,0	508,0	13	534	593	185	15	250	6XM16X140	90	19
745-29-0558-113	555,0 - 564,0	558,8	12	585	643	185	15	250	6XM16X140	90	20
745-29-0609-113	605,0 - 615,0	609,6	11	636	694	185	15	250	6XM16X140	90	21
745-29-0660-113	654,0 - 666,0	660,4	10	686	745	185	15	250	6XM16X140	90	22
745-29-0711-113	705,0 - 717,0	711,2	9	737	796	185	15	250	6XM16X140	90	23
745-29-0762-113	756,0 - 768,0	762,0	9	788	847	185	15	250	6XM16X140	90	24
745-29-0812-113	806,0 - 818,0	812,8	9	839	897	185	15	250	6XM16X140	90	25
745-29-0863-113	857,0 - 869,0	863,6	8	890	948	185	15	250	6XM16X140	90	26
745-29-0914-113	906,0 - 920,0	914,4	8	940	999	185	15	250	6XM16X140	90	27
745-29-1016-113	1010,0 - 1022,0	1016,0	7	1042	1101	185	15	250	6XM16X140	90	29